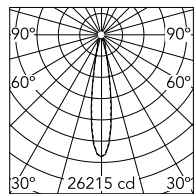
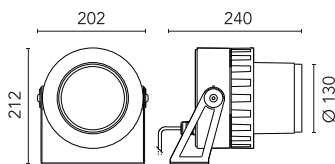
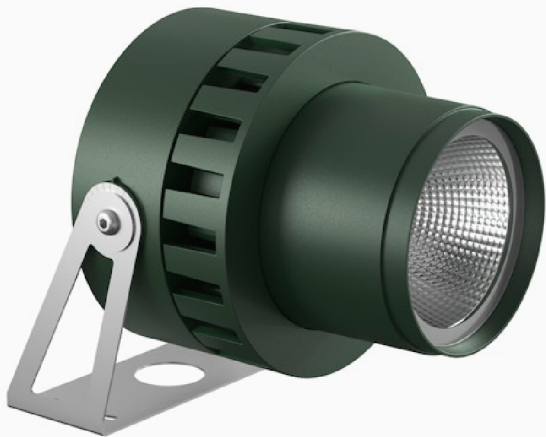


Spock 3

Flos

No. FA54101212



Luminous flux luminaire
4365 lm

Beam Angle: 18°

h(m)	E(lx)	D(m)
1	26215	0.32
2	6554	0.64
3	2913	0.97
4	1638	1.29
5	1049	1.61

Adjustable projector for installation on ceiling, wall or floor. Configuration: die-cast aluminium structure, EN AB-47100 alloy (low copper content) and AISI 316L stainless steel fixing bracket. Glass diffuser: extra clear with silkscreen border, fixed through a robotic gluing system. The luminaire has three connected parts: wiring unit (silicone gasket), heat sink and emitting unit (silicone glue). A graduated fixing plate allows a precise adjustment of the emitting unit. Double layer coating for high resistance to corrosion: the aluminium components are painted with a double coat using powders which are compliant with QUALICOAT standards: a first layer of epoxy powder (with excellent chemical and mechanical resistance) and a second finishing layer of polyester powder (resistant to UV rays and atmospheric agents). The entire painting process of the aluminium fitting starts from components which have been sand-blasted in advance to make the surface more porous and increase the adherence of the paint. Ares effects alkaline and acid washing to clean the surfaces completely, then rinses with demineralised water to remove any residue particles, subsequently a chemical conversion treatment is done to protect against rusting. Protection rating: IP66 In compliance with EN60598-1 standards Class of insulation: I Installation: the luminaire is equipped with 1000mm of cable for an easy-to-make connection. We recommend the use of a connection system with a protection degree greater than or equal to the protection degree of the luminaire. During the installation and the maintenance of the fixtures it is important to be careful and avoid damages on the paint coating. Damages on the coating exposed to outdoor conditions or water, could cause corrosion. Chemical substances affect the anticorrosion covering protection.

Designed by Flos Outdoor



Forest Green

Technical

Mounting	Projectors,Spike Lights,Wall
Flux	4365lm
IP Rating	IP66

Photometric

Colour Temp	3000K
Dimming	Non Dimmable
Beam Angle	20
CRI	80

Physical

Electrical

Power	45
Voltage	220-240
Driver	Integrated
Insulation class	I



Our product range updates frequently. All product specifications and data are subject to change without warning in order to improve reliability, function, performance or otherwise. We make every effort to ensure the accuracy of our product images, however due to different lighting and screens used for viewing, the colours may vary. Images are indicative of the quality and style of the product but may not represent the precise details of the product you receive. This is because we are constantly working to make improvements. For aesthetic reasons, cables and/or electrical elements are often not shown. Refer to technical data sheets for all technical data. Images and colours are not part of any contract or warranty in any way.