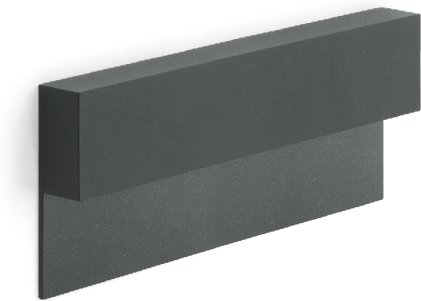


Tape 220

Lombardo

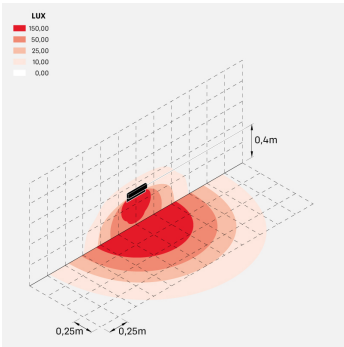
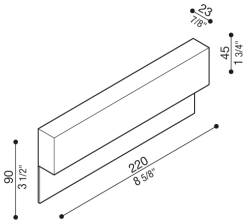
No. LL14503K3



Kit Tape 80: ... Tape 80 + Scatola incasso standard 502 Kit Tape 140: ... Tape 140 + Scatola incasso standard 503 Kit Tape 220: ... Tape 220 + Scatola incasso standard 506L Also suitable for outdoor use. Die-cast primary aluminium body EN-AB46100; high resistance to oxidation thanks to cataphoresis treatment and painting with polyester resins stabilised against UV rays. Satin-finish toughened glass diffuser. Wall or standard box fixing bracket in AISI 316L steel. Power supply 24V, ballast not included. External driver housed in standard 502 / 503 / 506L recessed boxes. LED 4000K (N), 3000K (3) or 2700K (2). No photobiological risk, RG0 risk group (EN62471). Codes LL14513: Kit consisting of Tape 220 + LB1070069 (driver IP66), it can be housed in standard 506 recess box Codes LL14523: Kit consisting of Tape 220 + recess box 506 LB11680 + LB1070069 (driver IP66)



Corten



Technical

Mounting	Wall
IP Rating	IP66
IK Rating	IK06

Photometric

Colour Temp	3000K
Source	LED

Physical

Electrical

Power	LED - 870 lm 6W
-------	-----------------

